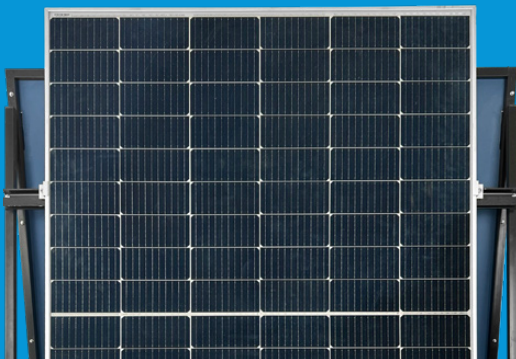




Training & Assessment Rigs Catalogue



Issued July 2025

Bespoke Rig Building Service

Bespoke rig list

C&G approved 5357 mobile double sided

**Together are
*LCL signed off*** ASHP wall hang working unit
ASHP component identification unit

Accredited Motor testing boards
Vented / unvented cylinder HWSS training

Adaptable To Star Delta & motor sizes

NAPIT Foundation can provide your training environment a quality, bespoke service, tailored to your organisations exact requirements.

Our clean tool & machine area is situated at our head office and is set up to produce high specification training and assessment rigs.

Side A Domestic and Commercial Training or Assessment Rig



TC Code: TC10126 (both side A & B combined)
TC10127 (side A)
TC10128 (side B)

Type: Steel framed mobile rig.

Dimensions: 1.2m x 1.8m x 0.7m (including base and wheels).

All photos are for visualisation purposes only and are subject to change at any time.

Side B



Technical Specifications: Designed for both domestic and commercial training or assessment scenarios. Incorporates single and 3 phase installation sections with a mains connection facility.

The complete package to prove competency in completing Electrical Installation Condition Reports, Electrical Installation Certificates and Minor Works Certificates. Also includes switchable faults.

All photos are for visualisation purposes only and are subject to change at any time.

Side A Inspection and Testing Assessment Rig

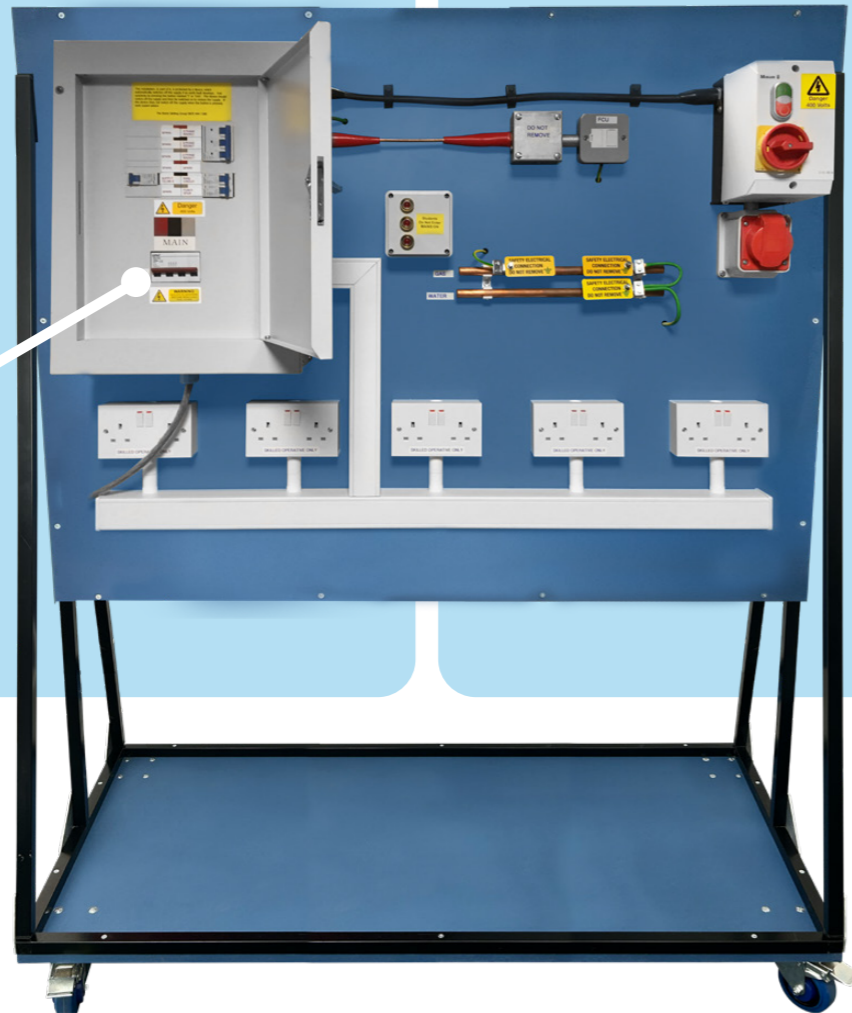


TC Code: TC10129

Type: Steel framed mobile rig on wheels.

Dimensions: 1.2m x 1.8m x 0.7m (including base and wheels).

Technical Specifications: Suitable for all Inspect & Test preparation and applicable across all Awarding Organisation.



All photos are for visualisation purposes only and are subject to change at any time.

Side B

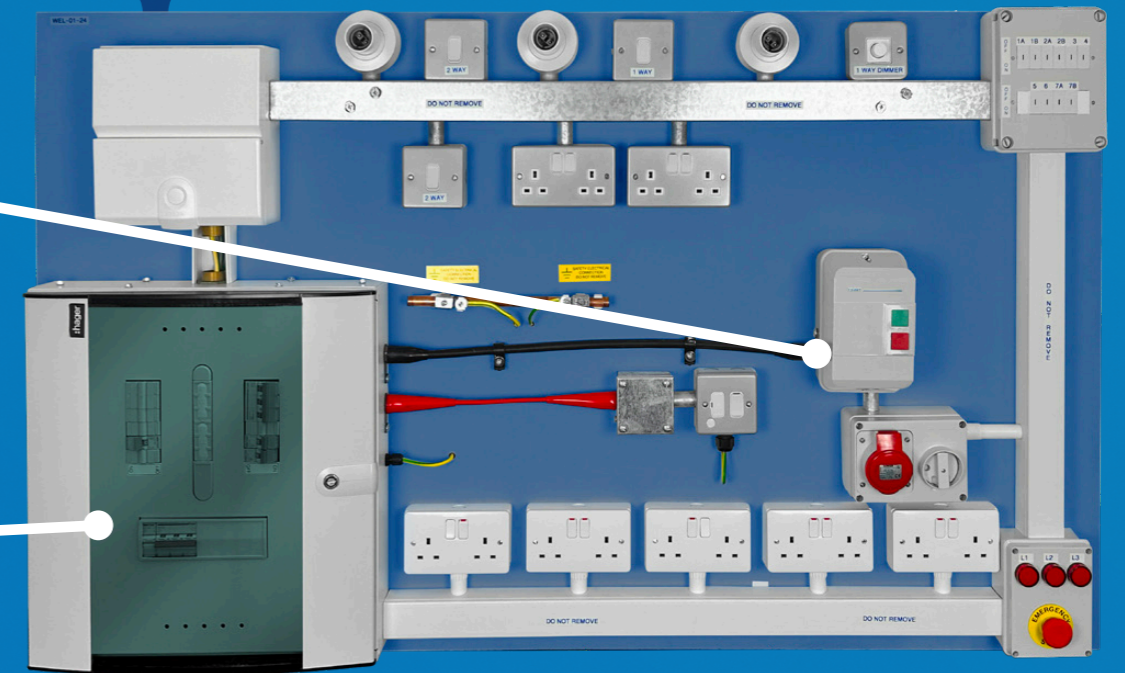


The rig incorporates single and 3 phase distribution areas with specific faults built into the circuits to prove competency in completing Minor Works, Electrical Installation Certificates and Electrical Installation Condition Reports. The 3 phase distribution board having SWA, MICC along with trunking & conduit wiring systems complete with main protective bonding simulation.

The Single phase distribution board feeding 1 way and 2 way lighting circuits including dimmer switch together with ring final circuit. The complete industrial style installation, utilising metal trunking containment and metal accessories, again with main protective bonding simulation.

All photos are for visualisation purposes only and are subject to change at any time.

Inspection and Testing Assessment Rig 4a



TC Code: TC10130

Type: Steel framed mobile rig on wheels.

Dimensions: 1.2m x 1.8m x 0.7m (including base and wheels).

Technical Specifications: Suitable for all Inspect & Test preparation and applicable across all Awarding Organisation.

The rig incorporates single and 3 phase distribution areas with specific faults built into the circuits to prove competency in completing Minor Works, Electrical Installation Certificates and Electrical Installation Condition Reports. .

All photos are for visualisation purposes only and are subject to change at any time.

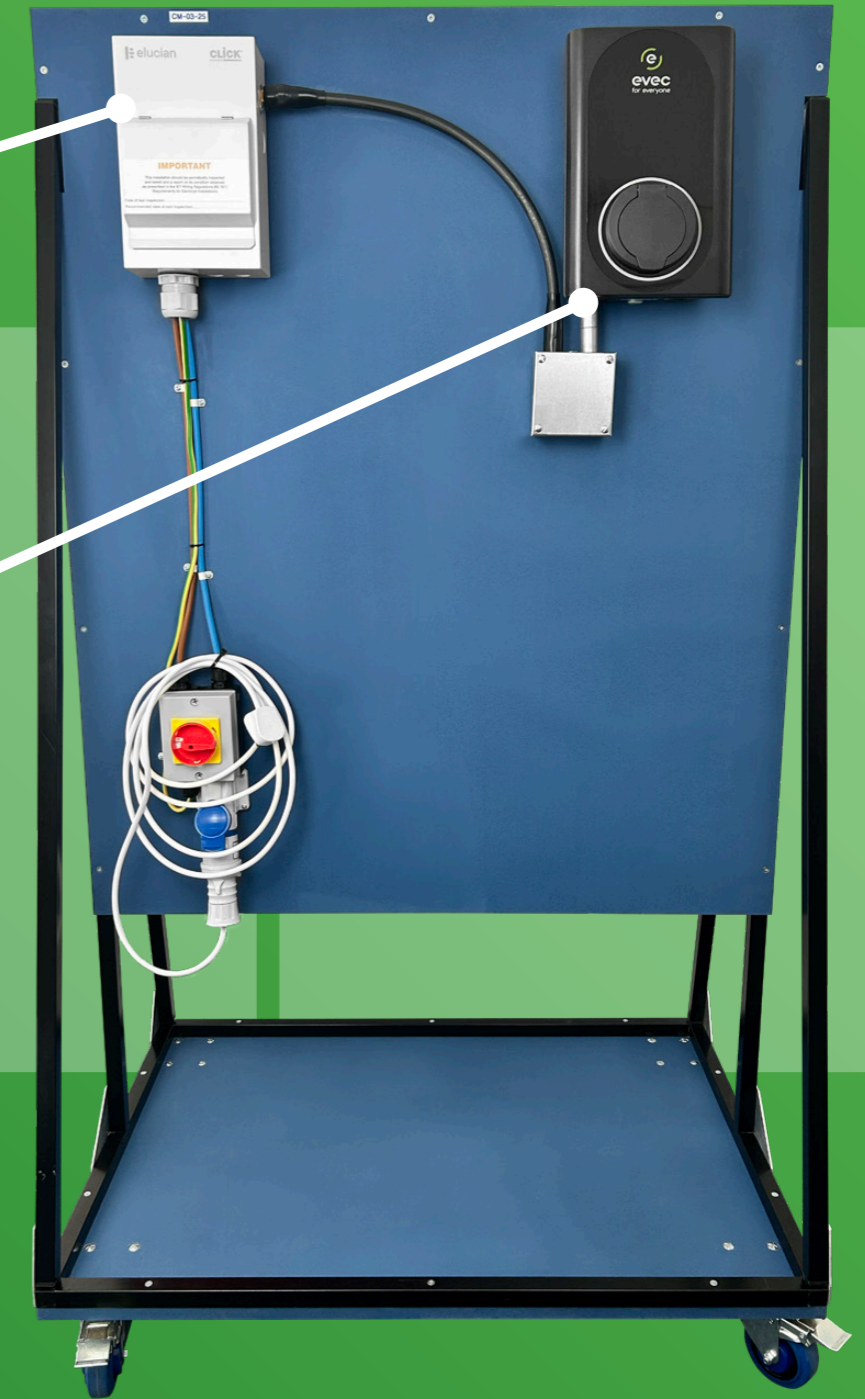
The 3 phase distribution board having SWA, MICC along with trunking & conduit wiring systems complete with main protective bonding simulation.

The Single phase distribution board feeding 1 way and 2 way lighting circuits including dimmer switch together with ring final circuit.

The complete industrial style installation, utilising metal trunking containment and metal accessories, again with main protective bonding simulation.

All photos are for visualisation purposes only and are subject to change at any time.

Domestic 7kW EV Chargepoint Rig



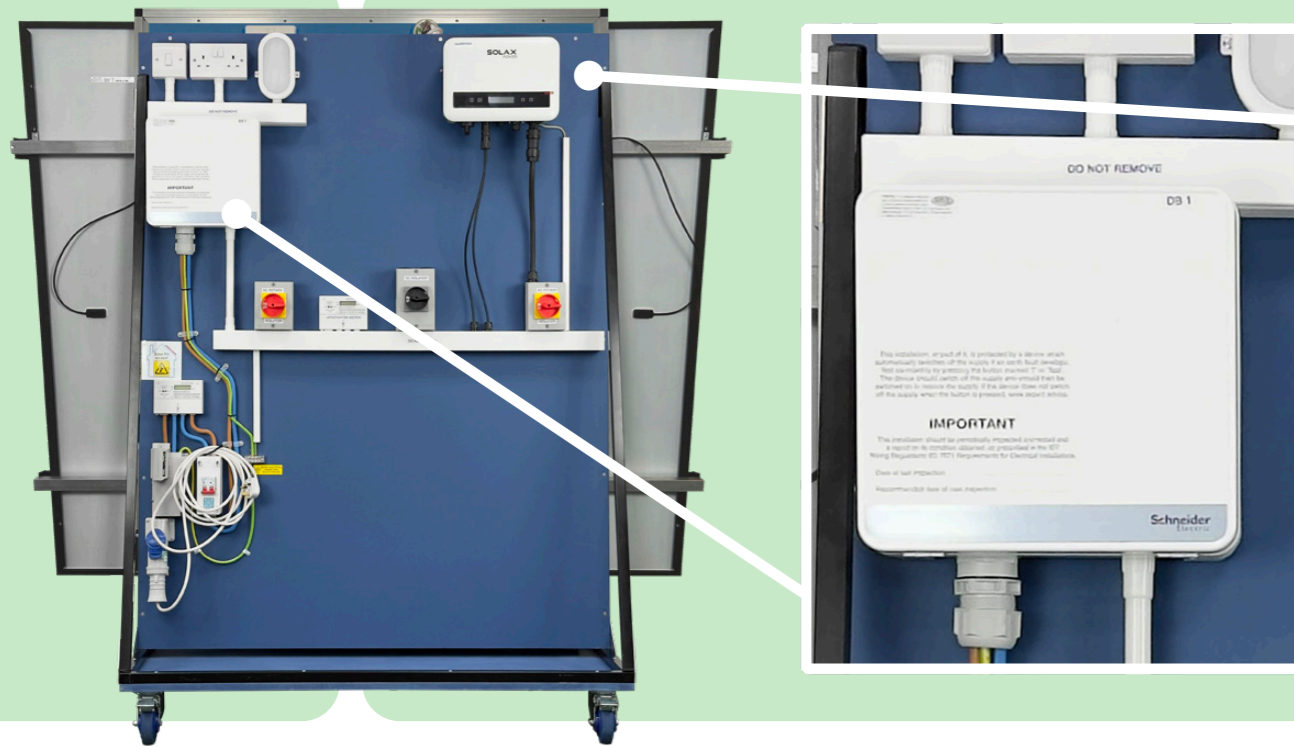
TC Code: TC10077

Type: Steel framed mobile rig.

Dimensions: 0.9m x 1.8m x 0.7m (includes base and wheels).

Technical Specifications: A distribution board, fed by a 25mm meter tails and a 16mm earthing conductor with rotary isolator for safe isolation, fed via a 32-amp type B circuit breaker to BSEN 60898. The 10mm cable is fed into an 80mm x 80mm galvanised box - this is for testing purposes to prevent damage. The reason why this is 10m is because the equipment can back feed into the grid, effectively using the car as a battery storage.

Side A Solar Photovoltaic Rig



TC Code: TC10078

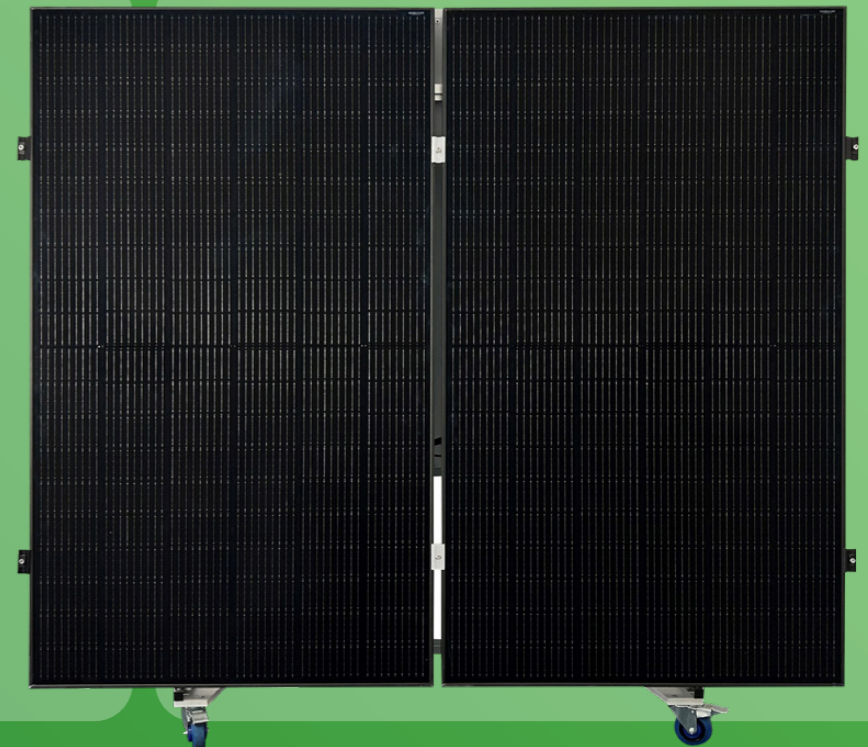
Type: Steel framed mobile rig.

Dimensions: 1.4m x 1.8m x .7m (including base and wheels). The two solar photovoltaic modules are detachable for transportation.

Technical Specifications: The rig incorporates 13-amp main supply AEC lead into distributors cut out, which feeds into the supply meter. This goes into a Henley block, which splits into two distribution boards. The first (left side) simulates the house with a double socket & light feed off it.

All photos are for visualisation purposes only and are subject to change at any time.

Side B

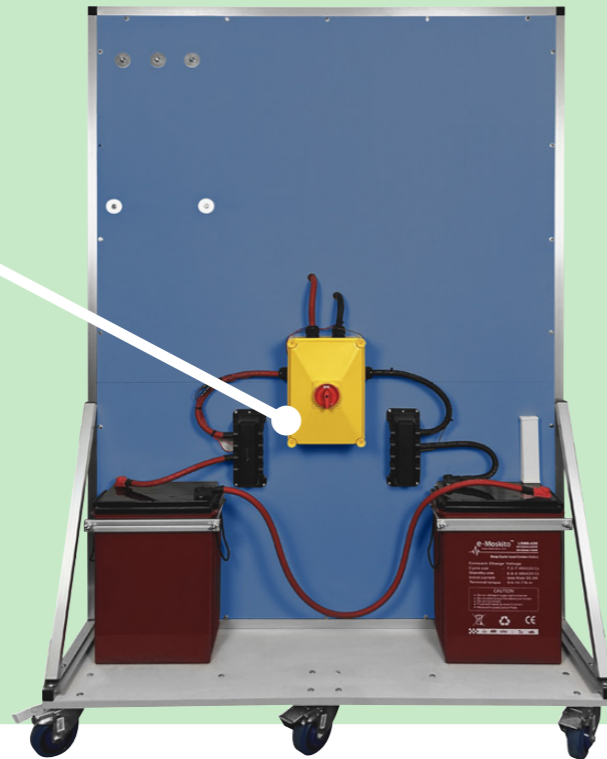
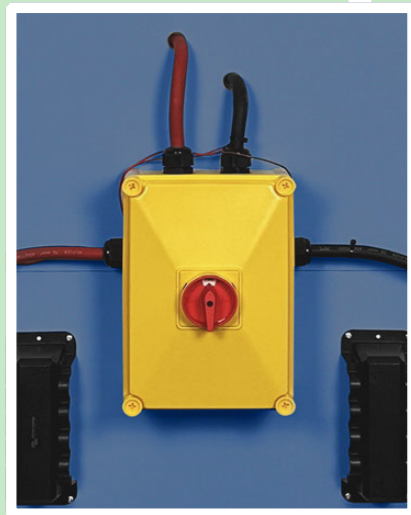


The second (right side) is the supply feeding the solar photovoltaic system. From the distribution board we have isolator 1, energy meter and isolator 2 feeding the solar photovoltaic supply.

The reverse of the board we have two solar photovoltaic modules that feed the DC isolator then the isolator feeds the inverter.

All photos are for visualisation purposes only and are subject to change at any time.

Side A Electrical Energy Storage Systems Rig



TC Code: TC10079

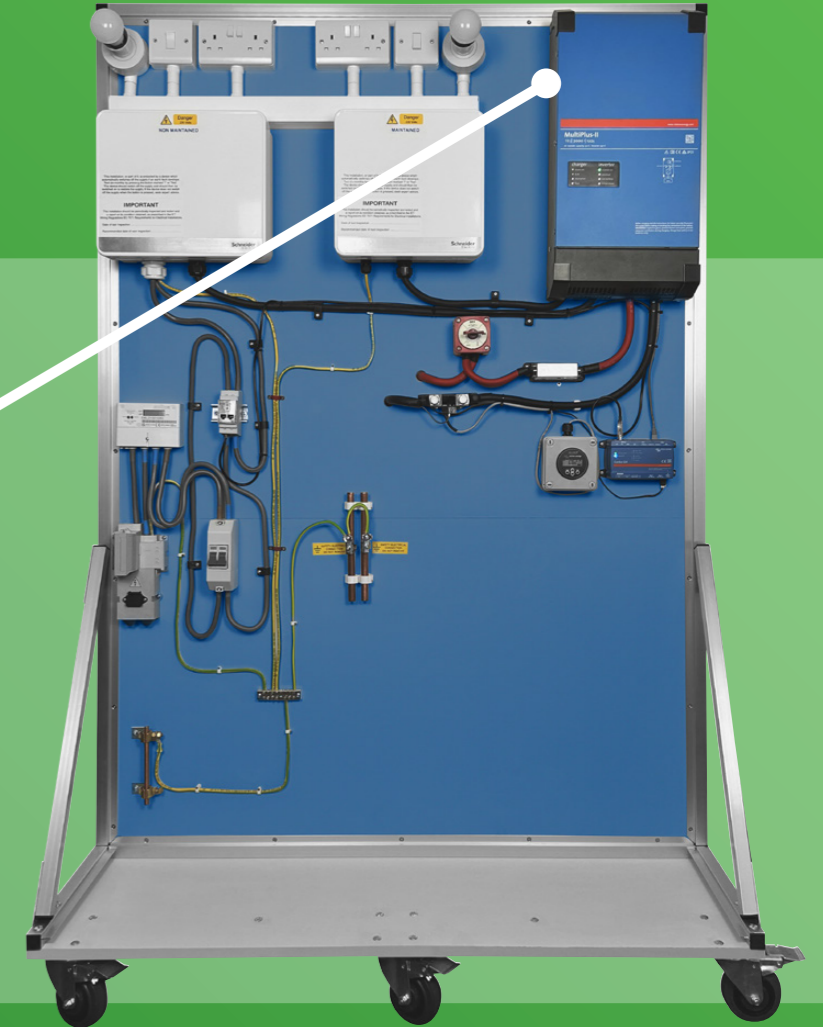
Type: Aluminium framed mobile rig.

Dimensions: 1.4m x 1.8m x .7m (including base and wheels)

Technical Specifications: The rig is fed via a 12 V supply from 2x batteries. It incorporates an amp main supply IEC lead into distributors cut out, which feeds into the supply meter. This goes into a double-pole isolator switch, which feeds through to a current transformer into distribution board 1 - this simulates a house distribution board, which feeds the Victron electrical energy storage unit.

All photos are for visualisation purposes only and are subject to change at any time.

Side B



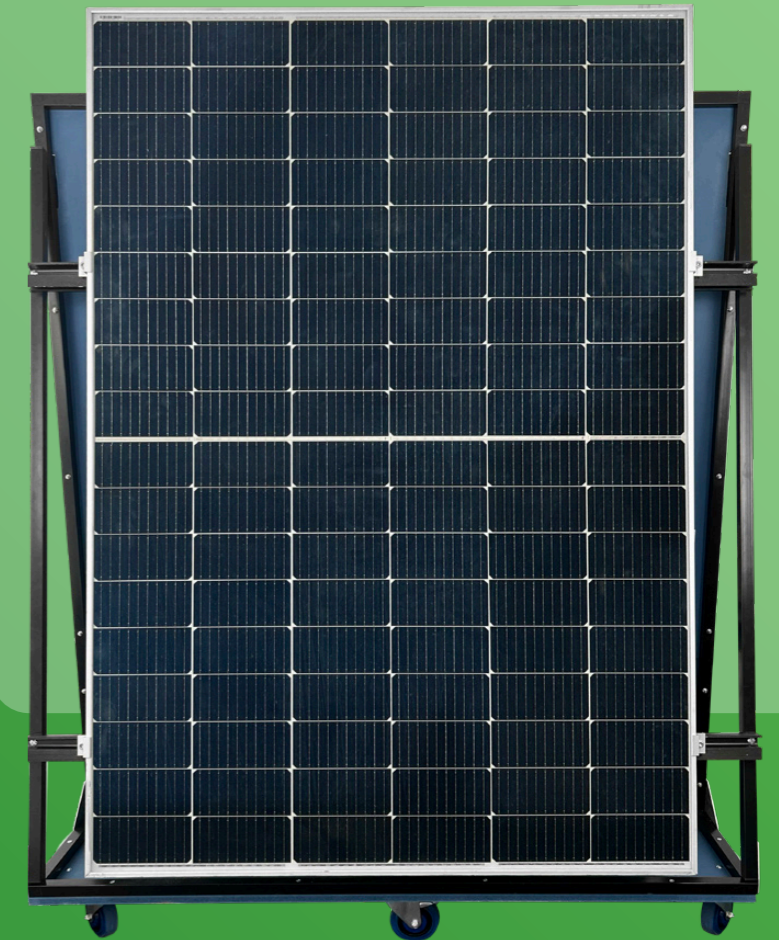
This unit feeds the essential distribution board. The main earthing terminal is connected to a supplementary rod as this is a requirement for the essential distribution board.

Upon a mains failure the electrical energy storage unit is G98 compliant, and this disconnects itself from the grid. Note: Products / Manufacturers can be sourced to client requirements.

All photos are for visualisation purposes only and are subject to change at any time.

Side A Combined Rig Systems: Solar Photovoltaic and

Electrical Energy Storage Side B



TC Code: TC10105

Type: Aluminium framed mobile rig.

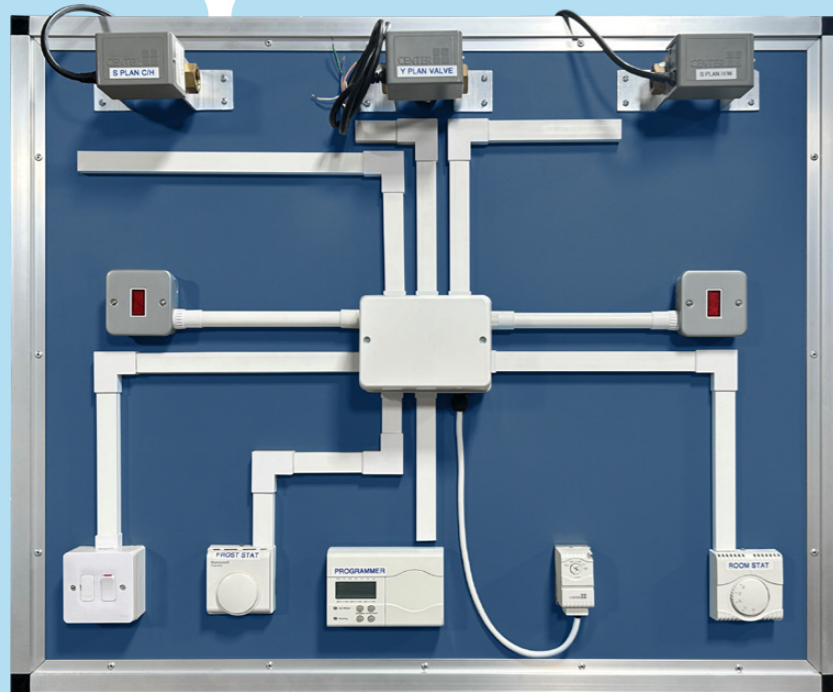
Dimensions: Approximately 1.4m x 1.8m x .7m (including base and wheels). The solar photovoltaic module is detachable for transportation.

Technical Specifications: The rig comes with AC/DC power supply that powers a 3.5kW hybrid Inverter and Battery unit. This has a distribution board 1 - this simulates a house distribution board, and an essential distribution board.

Power Supply

The reverse of the board we have one solar photovoltaic module and power supply that feeds the DC isolator, then the isolator in turn, feeds the inverter.

Central Heating System Controls Rig



TC Code: TC10095

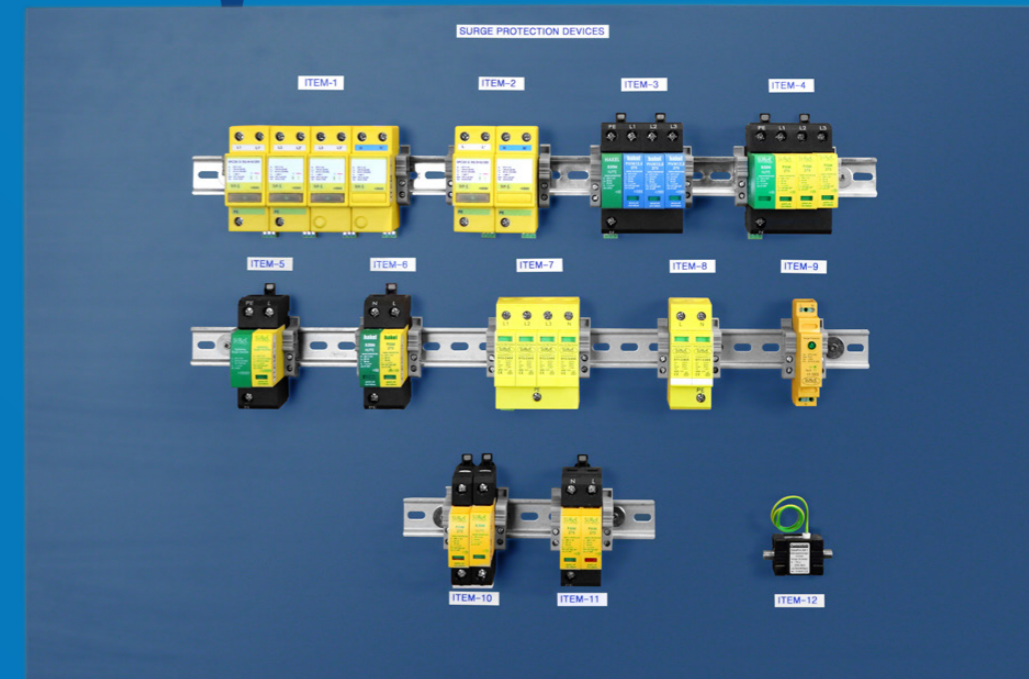
Type: Wall mountable.

Dimensions: Approximately 1m x 0.66m.

Technical Specifications: A compact S and Y plan for training and testing. Comprising the required 2 and 3 port valves, all programmer and thermostatic controls together with wiring centre and provision for electrical mains connection.

All photos are for visualisation purposes only and are subject to change at any time.

Surge Protection Display Rig



TC Code: TC10106

Type: Wall mountable.

Dimensions: Approximately 1m x 0.66m.

Technical Specifications: A handy, visual aid for a surge protection course. The rig displays the various types and combinations of surge protective devices that may be required in domestic or industrial / commercial installations.

All photos are for visualisation purposes only and are subject to change at any time.

Fire Alarm Training Rig



TC Code: TC10125

Type: Wall mountable.

Dimensions: Approximately 1m x 0.66m.

Technical Specifications: A 2 zone fire panel to provide training in the wiring and installation of a zoned fire alarm system. Includes the fire alarm panel, heat and smoke detectors, a manual call point and neon beacon. Also includes a mains connection facility to enable full testing and certification of the system by the trainee.

All photos are for visualisation purposes only and are subject to change at any time.

Inspection and Testing: EICR Training Rig



TC Code: TC10096

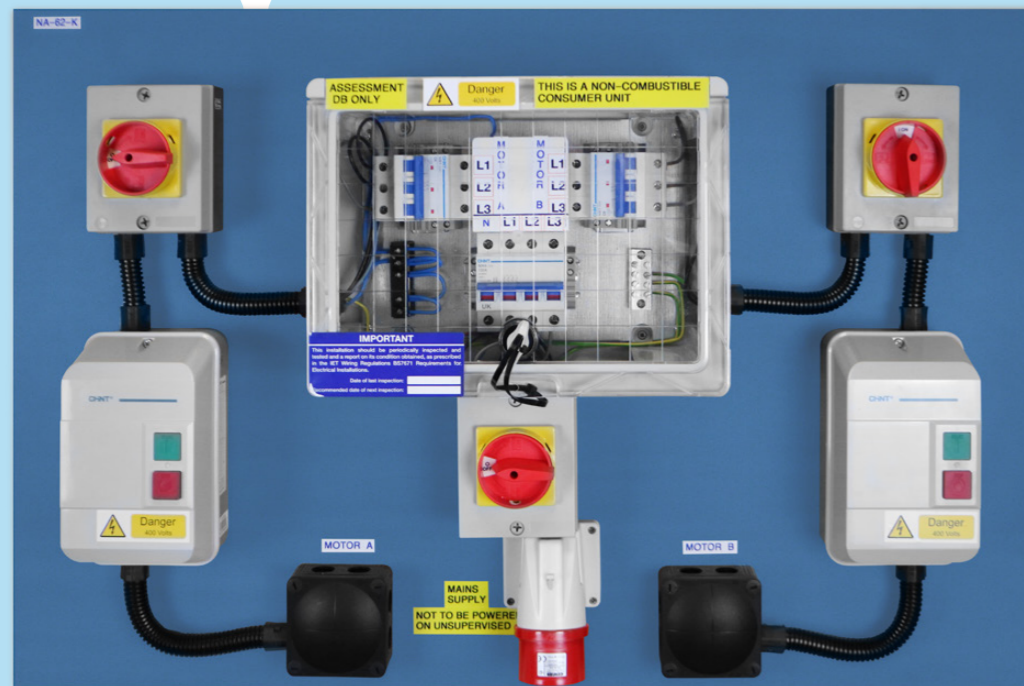
Type: Wall mountable.

Dimensions: Approximately 1m x 0.66m.

Technical Specifications: Industrial style for practical experience in inspection and testing leading to Electrical Installation Condition Reports. This rig enables visual inspection and testing for the trainee to locate non conformities and faults in order to apply the appropriate C1, C2, C3 and FI coding.

All photos are for visualisation purposes only and are subject to change at any time.

Safe Isolation: Commercial 3 Phase Training Rig



TC Code: TC10076

Type: Wall mountable.

Dimensions: Approximately 1m x 0.66m.

Technical Specifications: A simulated 3 phase installation comprising of a main isolator, 3 phase distribution board, local isolators to contactor motor control and motor terminal connection test points and the facility for 3 phase mains connection. This arrangement provides various lockable isolation points for training in 3 phase safe isolation and locking off and test procedures.

All photos are for visualisation purposes only and are subject to change at any time.

Safe Isolation: Domestic Single Phase Training Rig



TC Code: TC10075

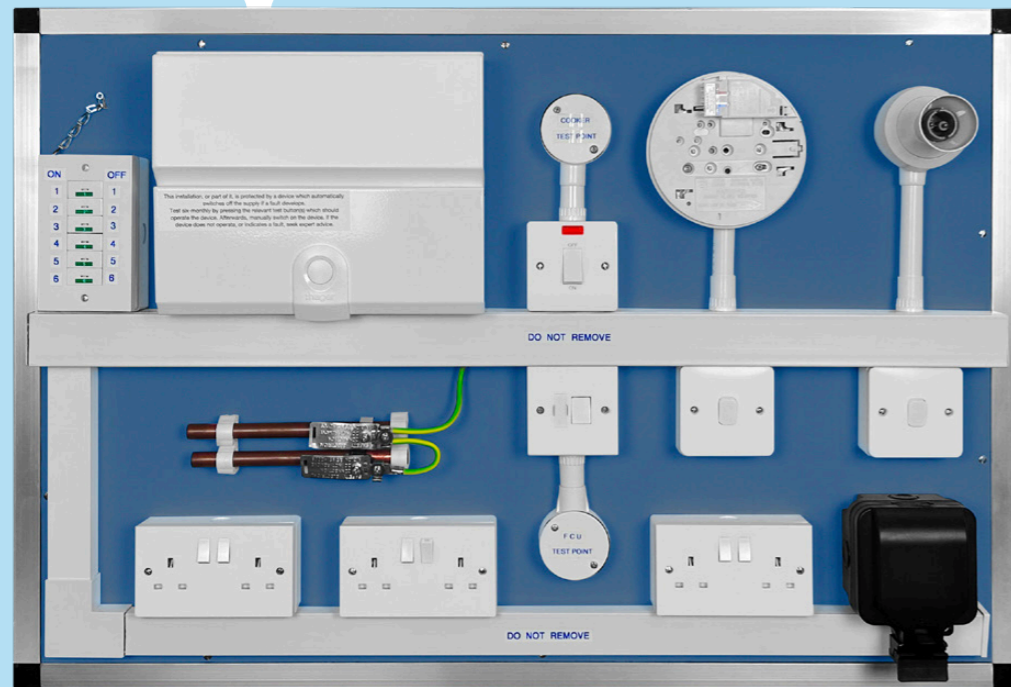
Type: Wall mountable.

Dimensions: Approximately 1m x 0.66m.

Technical Specifications: A single phase training rig comprising of a consumer unit with 3 radial circuits for training in single phase safe isolation and test procedures in an installation with domestic style accessories.

All photos are for visualisation purposes only and are subject to change at any time.

Domestic Fault Finding Training Rig



TC Code: TC10098

Type: Wall mountable.

Dimensions: Approximately 1m x 0.66m.

Technical Specifications: A simulation of a domestic installation comprising of a consumer unit, ring final, radial and lighting circuits as well as a smoke alarm. Includes numerous key switch selectable faults which can be selected in or out by the instructor for training on domestic installation fault finding.

All photos are for visualisation purposes only and are subject to change at any time.

Air Source Heat Pump Rig



TC Code: TC10107

Type: Aluminium framed mobile rig.

Dimensions: Approximately 1.4m x 1.8m x 0.7m (including base and wheels).

Technical Specifications: A simulated domestic heating installation which features a domestic wall hung air source heat pump. It contains 3x radiators, expansion vessel, heating controls and thermostats and underfloor heating. The rig also comes with a number of faults built in.

All photos are for visualisation purposes only and are subject to change at any time.

Individual Bespoke Rigs can also be built to your current needs and specifications



 **NAPIT** | foundation

Tel: 0345 543 0330 foundation@napit.org.uk www.napit.org.uk

Please contact us for further information and pricing on any of our rigs listed or to discuss a specific rig to be customised and built to your requirements.

All photos are for visualisation purposes only and are subject to change at any time.